

5-1-2004

## End Matter

JMASM Editors

Follow this and additional works at: <http://digitalcommons.wayne.edu/jmasm>

### Recommended Citation

Editors, JMASM (2004) "End Matter," *Journal of Modern Applied Statistical Methods*: Vol. 3 : Iss. 1 , Article 29.

DOI: 10.22237/jmasm/1083371340

Available at: <http://digitalcommons.wayne.edu/jmasm/vol3/iss1/29>

This End Matter is brought to you for free and open access by the Open Access Journals at DigitalCommons@WayneState. It has been accepted for inclusion in Journal of Modern Applied Statistical Methods by an authorized editor of DigitalCommons@WayneState.

# PASS 2002

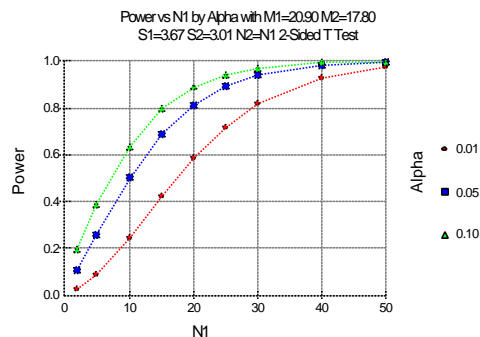
## Power Analysis and Sample Size Software from NCSS

*PASS* performs power analysis and calculates sample sizes. Use it before you begin a study to calculate an appropriate sample size (it meets the requirements of government agencies that want technical justification of the sample size you have used). Use it after a study to determine if your sample size was large enough. *PASS* calculates the sample sizes necessary to perform all of the statistical tests listed below.

A power analysis usually involves several "what if" questions. *PASS* lets you solve for power, sample size, effect size, and alpha level. It automatically creates appropriate tables and charts of the results.

*PASS* is accurate. It has been extensively verified using books and reference articles. Proof of the accuracy of each procedure is included in the extensive documentation.

*PASS* is a standalone system. Although it is integrated with *NCSS*, you do not have to own *NCSS* to run it. You can use it with any statistical software you want.



*PASS* comes with two manuals that contain tutorials, examples, annotated output, references, formulas, verification, and complete instructions on each procedure. And, if you cannot find an answer in the manual, our free technical support staff (which includes a PhD statistician) is available.

### System Requirements

*PASS* runs on Windows 95/98/ME/NT/2000/XP with at least 32 megs of RAM and 30 megs of hard disk space.

*PASS* sells for as little as **\$449.95**.

### PASS Beats the Competition!

**No other program calculates sample sizes and power for as many different statistical procedures as does *PASS*.**

Specifying your input is easy, especially with the online help and manual.

*PASS* automatically displays charts and graphs along with numeric tables and text summaries in a portable format that is cut and paste compatible with all word processors so you can easily include the results in your proposal.

Choose *PASS*. It's more comprehensive, easier-to-use, accurate, and less expensive than any other sample size program on the market.

### Trial Copy Available

You can try out *PASS* by downloading it from our website. This trial copy is good for 30 days. We are sure you will agree that it is the easiest and most comprehensive power analysis and sample size program available.

### Analysis of Variance

Factorial AOV  
Fixed Effects AOV  
Geisser-Greenhouse  
MANOVA\*  
Multiple Comparisons\*  
One-Way AOV  
Planned Comparisons  
Randomized Block AOV  
New Repeated Measures AOV\*

### Regression / Correlation

Correlations (one or two)  
Cox Regression\*  
Logistic Regression  
Multiple Regression  
Poisson Regression\*  
Intraclass Correlation  
Linear Regression

### Proportions

Chi-Square Test  
Confidence Interval  
Equivalence of McNemar\*  
Equivalence of Proportions  
Fisher's Exact Test  
Group Sequential Proportions  
Matched Case-Control  
McNemar Test  
Odds Ratio Estimator  
One-Stage Designs\*  
Proportions - 1 or 2  
Two Stage Designs (Simon's)  
Three-Stage Designs\*

### Miscellaneous Tests

Exponential Means - 1 or 2\*  
ROC Curves - 1 or 2\*  
Variances - 1 or 2

### T Tests

Cluster Randomization  
Confidence Intervals  
Equivalence T Tests  
Hotelling's T-Squared\*  
Group Sequential T Tests  
Mann-Whitney Test  
One-Sample T-Tests  
Paired T-Tests  
Standard Deviation Estimator  
Two-Sample T-Tests  
Wilcoxon Test

### Survival Analysis

Cox Regression\*  
Logrank Survival -Simple  
Logrank Survival - Advanced\*  
Group Sequential - Survival  
Post-Marketing Surveillance  
ROC Curves - 1 or 2\*

### Group Sequential Tests

Alpha Spending Functions  
Lan-DeMets Approach  
Means  
Proportions  
Survival Curves

### Equivalence

Means  
Proportions  
Correlated Proportions\*

### Miscellaneous Features

Automatic Graphics  
Finite Population Corrections  
Solves for any parameter  
Text Summary  
Unequal N's

\*New in *PASS* 2002

# PASS 2002 adds power analysis and sample size to your statistical toolbox

## WHAT'S NEW IN PASS 2002?

Thirteen new procedures have been added to *PASS* as well as a new home-base window and a new Guide Me facility.

## MANY NEW PROCEDURES

The new procedures include a new multi-factor repeated measures program that includes multivariate tests, Cox proportional hazards regression, Poisson regression, MANOVA, equivalence testing when proportions are correlated, multiple comparisons, ROC curves, and Hotelling's T-squared.

## TEXT STATEMENTS

The text output translates the numeric output into easy-to-understand sentences. These statements may be transferred directly into your grant proposals and reports.

## GRAPHICS

The creation of charts and graphs is easy in *PASS*. These charts are easily transferred into other programs such as MS PowerPoint and MS Word.

## NEW USER'S GUIDE II

A new, 250-page manual describes each new procedure in detail. Each chapter contains explanations, formulas, examples, and accuracy verification.

The complete manual is stored in PDF format on the CD so that you can read and printout your own copy.

## GUIDE ME

The new *Guide Me* facility makes it easy for first time users to enter parameter values. The program literally steps you through those options that are necessary for the sample size calculation.

## NEW HOME BASE

A new home base window has been added just for *PASS* users. This window helps you select the appropriate program module.

## COX REGRESSION

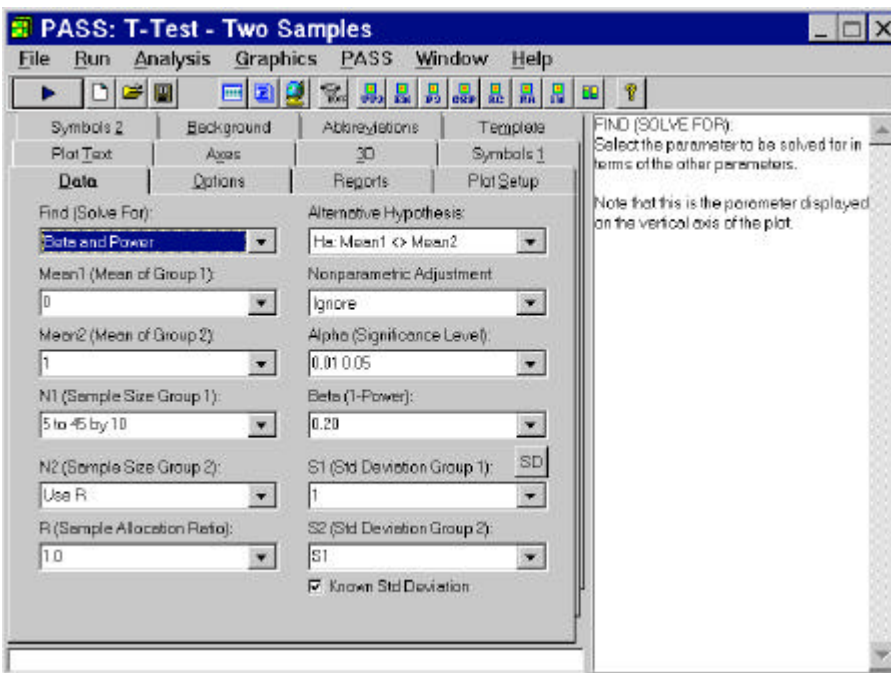
A new Cox regression procedure has been added to perform power analysis and sample size calculation for this important statistical technique.

## REPEATED MEASURES

A new repeated-measures analysis module has been added that lets you analyze designs with up to three grouping factors and up to three repeated factors. The analysis includes both the univariate F test and three common multivariate tests including Wilks Lambda.

## RECENT REVIEW

In a recent review, 17 of 19 reviewers selected *PASS* as the program they would recommend to their colleagues.



## PASS calculates sample sizes for...

Please rush me my own personal license of *PASS 2002*.

Qty

- \_\_\_ PASS 2002 Deluxe (CD and User's Guide): \$499.95.....\$ \_\_\_\_\_
- \_\_\_ PASS 2002 CD (electronic documentation): \$449.95 .....\$ \_\_\_\_\_
- \_\_\_ PASS 2002 5-User Pack (CD & 5 licenses): \$1495.00.....\$ \_\_\_\_\_
- \_\_\_ PASS 2002 25-User Pack (CD & 25 licenses): \$3995.00 ....\$ \_\_\_\_\_
- \_\_\_ PASS 2002 User's Guide II (printed manual): \$30.00.....\$ \_\_\_\_\_
- \_\_\_ PASS 2002 Upgrade CD for *PASS 2000* users: \$149.95 .....\$ \_\_\_\_\_

Typical Shipping & Handling: USA: \$9 regular, \$22 2-day, \$33 overnight. Canada: \$19 Mail. Europe: \$50 Fedex.....\$ \_\_\_\_\_

Total: .....\$ \_\_\_\_\_

FOR FASTEST DELIVERY, ORDER ONLINE AT

**WWW.NCSS.COM**

Email your order to sales@ncss.com

Fax your order to (801) 546-3907

NCSS, 329 North 1000 East, Kaysville, UT 84037

(800) 898-6109 or (801) 546-0445

## My Payment Options:

- \_\_\_ Check enclosed
- \_\_\_ Please charge my: \_\_\_VISA \_\_\_MasterCard \_\_\_Amex
- \_\_\_ Purchase order enclosed

Card Number \_\_\_\_\_ Expires \_\_\_\_\_

Signature \_\_\_\_\_  
Please provide daytime phone:

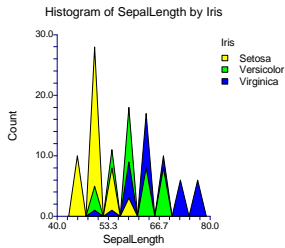
( ) \_\_\_\_\_

## Ship my *PASS 2002* to:

NAME \_\_\_\_\_  
COMPANY \_\_\_\_\_  
ADDRESS \_\_\_\_\_  
CITY/STATE/ZIP \_\_\_\_\_  
COUNTRY (IF OTHER THAN U.S.) \_\_\_\_\_

# NCSS

329 North 1000 East  
Kaysville, Utah 84037



## Announcing NCSS 2004 Seventeen New Procedures

**NCSS 2004** is a new edition of our popular statistical **NCSS** package that adds seventeen new procedures.

### New Procedures

Two Independent Proportions  
Two Correlated Proportions  
One-Sample Binary Diagnostic Tests  
Two-Sample Binary Diagnostic Tests  
Paired-Sample Binary Diagnostic Tests  
Cluster Sample Binary Diagnostic Tests  
Meta-Analysis of Proportions  
Meta-Analysis of Correlated Proportions  
Meta-Analysis of Means  
Meta-Analysis of Hazard Ratios  
Curve Fitting  
Tolerance Intervals  
Comparative Histograms  
ROC Curves  
Elapsed Time Calculator  
T-Test from Means and SD's  
Hybrid Appraisal (Feedback) Model

### Documentation

The printed, 330-page manual, called *NCSS User's Guide V*, is available for \$29.95. An electronic (pdf) version of the manual is included on the distribution CD and in the Help system.

### Two Proportions

Several new exact and asymptotic techniques were added for hypothesis testing (null, noninferiority, equivalence) and calculating confidence intervals for the difference, ratio, and odds ratio. Designs may be independent or paired. Methods include: Farrington & Manning, Gart & Nam, Conditional & Unconditional Exact, Wilson's Score, Miettinen & Nurminen, and Chen.

### Meta-Analysis

Procedures for combining studies measuring paired proportions, means, independent proportions, and hazard ratios are available. Plots include the forest plot, radial plot, and L'Abbe plot. Both fixed and random effects models are available for combining the results.

### Curve Fitting

This procedure combines several of our curve fitting programs into one module. It adds many new models such as Michaelis-Menten. It analyzes curves from several groups. It compares fitted models across groups using computer-intensive randomization tests. It computes bootstrap confidence intervals.

### Tolerance Intervals

This procedure calculates one and two sided tolerance intervals using both distribution-free (nonparametric) methods and normal distribution (parametric) methods. Tolerance intervals are bounds between which a given percentage of a population falls.

### Comparative Histogram

This procedure displays a comparative histogram created by interspersing or overlaying the individual histograms of two or more groups or variables. This allows the direct comparison of the distributions of several groups.

### Random Number Generator

Matsumoto's Mersenne Twister random number generator (cycle length > 10\*\*6000) has been implemented.

### Binary Diagnostic Tests

Four new procedures provide the specialized analysis necessary for diagnostic testing with binary outcome data. These provide appropriate specificity and sensitivity output. Four experimental designs can be analyzed including independent or paired groups, comparison with a gold standard, and cluster randomized.

### ROC Curves

This procedure generates both binormal and empirical (nonparametric) ROC curves. It computes comparative measures such as the whole, and partial, area under the ROC curve. It provides statistical tests comparing the AUC's and partial AUC's for paired and independent sample designs.

### Hybrid (Feedback) Model

This new edition of our hybrid appraisal model fitting program includes several new optimization methods for calibrating parameters including a new genetic algorithm. Model specification is easier. Binary variables are automatically generated from class variables.

### Statistical Innovations Products

Through a *special arrangement* with Statistical Innovations (S.I.), NCSS customers will receive \$100 discounts on:

**Latent GOLD<sup>®</sup>** - latent class modeling

**SI-CHAID<sup>®</sup>** - segmentation trees

**GOLDMineR<sup>®</sup>** - ordinal regression

For demos and other info visit:

[www.statisticalinnovations.com](http://www.statisticalinnovations.com)

**Please rush me the following products:**

- Qty \_\_\_\_\_
- \_\_\_\_\_ **NCSS 2004 CD upgrade from NCSS 2001**, \$149.95 ..... \$ \_\_\_\_\_
- \_\_\_\_\_ **NCSS 2004 User's Guide V**, \$29.95..... \$ \_\_\_\_\_
- \_\_\_\_\_ **NCSS 2004 CD, upgrade from earlier versions**, \$249.95..... \$ \_\_\_\_\_
- \_\_\_\_\_ **NCSS 2004 Deluxe (CD and Printed Manuals)**, \$599.95..... \$ \_\_\_\_\_
- \_\_\_\_\_ **PASS 2002 Deluxe**, \$499.95 ..... \$ \_\_\_\_\_
- \_\_\_\_\_ **Latent Gold® from S.I.**, \$995 - \$100 NCSS Discount = \$895..... \$ \_\_\_\_\_
- \_\_\_\_\_ **GoldMineR® from S.I.**, \$695 - \$100 NCSS Discount = \$595..... \$ \_\_\_\_\_
- \_\_\_\_\_ **CHAID® Plus from S.I.**, \$695 - \$100 NCSS Discount = \$595.... \$ \_\_\_\_\_

Approximate shipping--depends on which manuals are ordered (U.S: \$10 ground, \$18 2-day, or \$33 overnight) (Canada \$24) (All other countries \$10) (Add \$5 U.S. or \$40 International for any S.I. product)..... \$ \_\_\_\_\_

**Total**..... \$ \_\_\_\_\_

**TO PLACE YOUR ORDER**

**CALL: (800) 898-6109 FAX: (801) 546-3907**

**ONLINE: [www.ncss.com](http://www.ncss.com)**

**MAIL: NCSS, 329 North 1000 East, Kaysville, UT 84037**

**My Payment Option:**

- \_\_\_\_\_ Check enclosed
- \_\_\_\_\_ Please charge my:  VISA  MasterCard  Amex
- \_\_\_\_\_ Purchase order attached \_\_\_\_\_

Card Number \_\_\_\_\_ Exp \_\_\_\_\_

Signature \_\_\_\_\_

**Telephone:**

( ) \_\_\_\_\_

**Email:**

\_\_\_\_\_

**Ship to:**

NAME \_\_\_\_\_

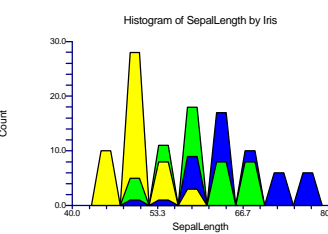
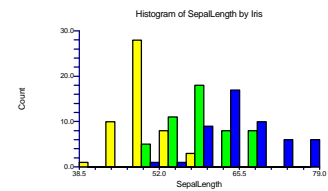
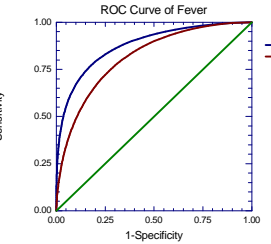
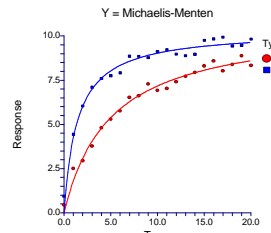
ADDRESS \_\_\_\_\_

ADDRESS \_\_\_\_\_

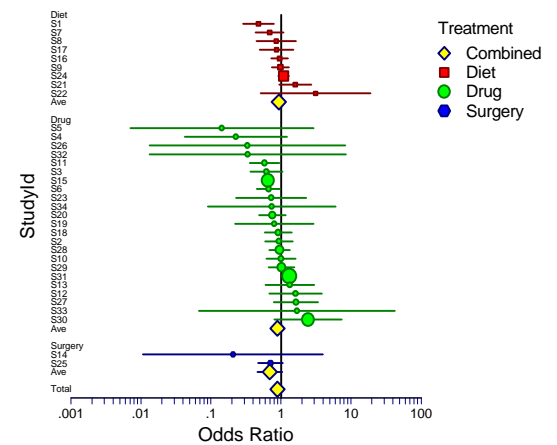
ADDRESS \_\_\_\_\_

CITY \_\_\_\_\_ STATE \_\_\_\_\_

ZIP/POSTAL CODE \_\_\_\_\_ COUNTRY \_\_\_\_\_



**Forest Plot of Odds Ratio**



**Statistical and Graphics Procedures Available in NCSS 2004**

**Analysis of Variance / T-Tests**

- Analysis of Covariance
- Analysis of Variance
- Barlett Variance Test
- Crossover Design Analysis
- Factorial Design Analysis
- Friedman Test
- Geiser-Greenhouse Correction
- General Linear Models
- Mann-Whitney Test
- MANOVA
- Multiple Comparison Tests
- One-Way ANOVA
- Paired T-Tests
- Power Calculations
- Repeated Measures ANOVA
- T-Tests – One or Two Groups
- T-Tests – From Means & SD's
- Wilcoxon Test

**Time Series Analysis**

- ARIMA / Box - Jenkins
- Decomposition
- Exponential Smoothing
- Harmonic Analysis
- Holt - Winters
- Seasonal Analysis
- Spectral Analysis
- Trend Analysis

**Plots / Graphs**

- Bar Charts
- Box Plots
- Contour Plot
- Dot Plots
- Error Bar Charts
- Histograms
- Histograms: Combined\*
- Percentile Plots
- Pie Charts
- Probability Plots
- ROC Curves\*
- Scatter Plots
- Scatter Plot Matrix
- Surface Plots
- Violin Plots

**Experimental Designs**

- Balanced Inc. Block
- Box-Behnken
- Central Composite
- D-Optimal Designs
- Fractional Factorial
- Latin Squares
- Plackett-Burman
- Response Surface
- Screening
- Taguchi

**Regression / Correlation**

- All-Possible Search
- Canonical Correlation
- Correlation Matrices
- Cox Regression
- Kendall's Tau Correlation
- Linear Regression
- Logistic Regression
- Multiple Regression
- Nonlinear Regression
- PC Regression
- Poisson Regression
- Response-Surface
- Ridge Regression
- Robust Regression
- Stepwise Regression
- Spearman Correlation
- Variable Selection

**Quality Control**

- Xbar-R Chart
- C, P, NP, U Charts
- Capability Analysis
- Cusum, EWMA Chart
- Individuals Chart
- Moving Average Chart
- Pareto Chart
- R & R Studies

**Survival / Reliability**

- Accelerated Life Tests
- Cox Regression
- Cumulative Incidence
- Exponential Fitting
- Extreme-Value Fitting
- Hazard Rates
- Kaplan-Meier Curves
- Life-Table Analysis
- Lognormal Fitting
- Log-Rank Tests
- Probit Analysis
- Proportional-Hazards
- Reliability Analysis
- Survival Distributions
- Time Calculator\*
- Weibull Analysis

**Multivariate Analysis**

- Cluster Analysis
- Correspondence Analysis
- Discriminant Analysis
- Factor Analysis
- Hottelling's T-Squared
- Item Analysis
- Item Response Analysis
- Loglinear Models
- MANOVA
- Multi-Way Tables
- Multidimensional Scaling
- Principal Components

**Curve Fitting**

- Bootstrap C.I.'s\*
- Built-In Models
- Group Fitting and Testing\*
- Model Searching
- Nonlinear Regression
- Randomization Tests\*
- Ratio of Polynomials
- User-Specified Models

**Miscellaneous**

- Area Under Curve
- Bootstrapping
- Chi-Square Test
- Confidence Limits
- Cross Tabulation
- Data Screening
- Fisher's Exact Test
- Frequency Distributions
- Mantel-Haenszel Test
- Nonparametric Tests
- Normality Tests
- Probability Calculator
- Proportion Tests
- Randomization Tests
- Tables of Means, Etc.
- Trimmed Means
- Univariate Statistics

**Meta-Analysis\***

- Independent Proportions\*
- Correlated Proportions\*
- Hazard Ratios\*
- Means\*

**Binary Diagnostic Tests\***

- One Sample\*
- Two Samples\*
- Paired Samples\*
- Clustered Samples\*

**Proportions**

- Tolerance Intervals\*
- Two Independent\*
- Two Correlated\*
- Exact Tests\*
- Exact Confidence Intervals\*
- Farrington-Manning\*
- Fisher Exact Test
- Gart-Nam\* Method
- McNemar Test
- Miettinen-Nurminen\*
- Wilson's Score\* Method
- Equivalence Tests\*
- Noninferiority Tests\*

**Mass Appraisal**

- Comparables Reports
- Hybrid (Feedback) Model\*
- Nonlinear Regression





# Qualitative research has come a long way...

from this...



to this!



**qsr**

**THE LATEST PRODUCTS  
HAVE ARRIVED**

[www.qsrinternational.com](http://www.qsrinternational.com)

**NS NVivo**

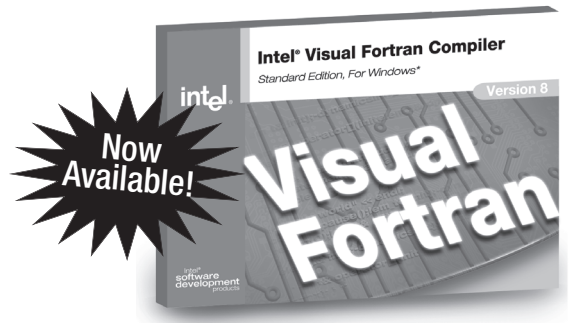
WORLD LEADING PRODUCTS FROM THE  
NUD\*IST LINE OF SOFTWARE

Read more about QSR software in this edition of JMASM.

# Two Years in the Making...

## Intel® Visual Fortran 8.0

The next generation of Visual Fortran is here! Intel Visual Fortran 8.0 was developed jointly by Intel and the former DEC/Compaq Fortran engineering team.



### Visual Fortran Timeline

- 1997** DEC releases Digital Visual Fortran 5.0
- 1998** Compaq acquires DEC and releases DVF 6.0
- 1999** Compaq ships CVF 6.1
- 2001** Compaq ships CVF 6.6
- 2001** Intel acquires CVF engineering team
- 2003** Intel releases Intel Visual Fortran 8.0

### Intel Visual Fortran 8.0

- CVF front-end + Intel back-end
- Better performance
- OpenMP Support
- Real\*16

### Performance

Outstanding performance on Intel architecture including Intel® Pentium® 4, Intel® Xeon™ and Intel Itanium® 2 processors, as well as support for Hyper-Threading Technology.

### Compatibility

- Plugs into Microsoft Visual Studio\* .NET
- Microsoft PowerStation4 language and library support
- Strong compatibility with Compaq\* Visual Fortran

### Support

1 year of free product upgrades and Intel Premier Support

*“The Intel Fortran Compiler 7.0 was first-rate, and Intel Visual Fortran 8.0 is even better. Intel has made a giant leap forward in combining the best features of Compaq Visual Fortran and Intel Fortran. This compiler... continues to be a ‘must-have’ tool for any Twenty-First Century Fortran migration or software development project.”*

—Dr. Robert R. Trippi  
Professor Computational Finance  
University of California, San Diego

FREE trials available at:  
[programmersparadise.com/intel](http://programmersparadise.com/intel)

Programmer's Paradise®

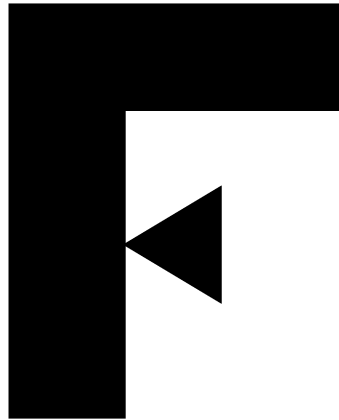
To order or request additional information call:  
800-423-9990  
Email: [intel@programmers.com](mailto:intel@programmers.com)

المنارة للاستشارات

*“Perfection is achieved, not when there is nothing more to add, but when there is nothing left to take away.”*

- Antoine de Saint Exupery

F is a carefully crafted subset of the most recent version of Fortran, the world’s most powerful numeric language.



Using F has some very significant advantages:

- Programs written in F will compile with any Fortran compiler
- F is easier to use than other popular programming languages
- *F compilers are free* and available for Linux, Windows, and Solaris
- Several books on F are available
- F programs may be linked with C, Fortran 95, or older Fortran 77 programs

F retains the modern features of Fortran—modules and data abstraction, for example—but discards older error-prone facilities of Fortran.

It is a safe and portable programming language.

F encourages Module-Oriented Programming.

It is ideal for teaching a programming language in science, engineering, mathematics, and finance.

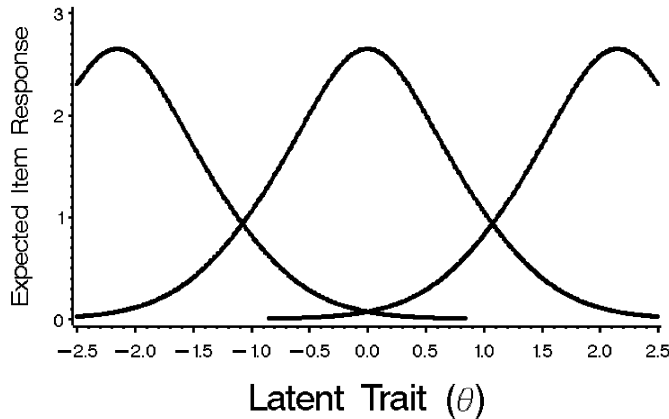
It is ideal for new numerically intensive programs.

The Fortran Company  
11155 E. Mountain Gate Place, Tucson, AZ 85749 USA  
+1-520-256-1455 +1-520-760-1397 (fax)  
<http://www.fortran.com> [info@fortran.com](mailto:info@fortran.com)



# ***GGUM2000***

## *Item Response Theory Models for Unfolding*



The GGUM2000 software system estimates parameters in a family of item response theory (IRT) models that unfold polytomous responses to questionnaire items. These models assume that persons and items can be jointly represented as locations on a latent unidimensional continuum. A single-peaked, nonmonotonic response function is the key feature that distinguishes unfolding IRT models from traditional, "cumulative" IRT models. This response function suggests

that a higher item score is more likely to the extent that an individual is located close to a given item on the underlying continuum. Such single-peaked functions are appropriate in many situations including attitude measurement with Likert or Thurstone scales, and preference measurement with stimulus rating scales. This family of models can also be used to determine the locations of respondents in particular developmental processes that occur in stages.

The GGUM2000 system estimates item parameters using marginal maximum likelihood, and person parameters are estimated using an expected a posteriori (EAP) technique. The program allows for up to 100 items with 2-10 response categories per item, and up to 2000 respondents. The software is accompanied by a detailed user's manual. **GGUM2000 is free** and can be downloaded from:

<http://www.education.umd.edu/EDMS/tutorials>

Start putting the power of unfolding IRT models to work in your attitude and preference measurement endeavors. Download your free copy of GGUM2000 today!



## Are you involved in Data Modeling or Data Mining?

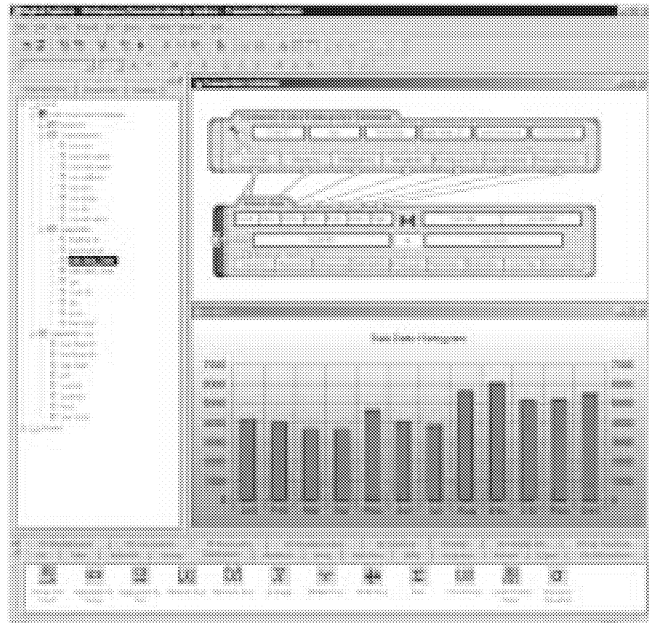
## Are you spending a large percentage of your time dealing with data issues?

If so, you will be happy to know that we have developed a tool that specifically addresses the data prep tasks associated with data modeling and data mining. The tool is called the Digital Excavator from Digital Archaeology ([www.digarch.com](http://www.digarch.com)). Data modelers are well aware of the time-consuming and sometimes frustrating nature of data set-up. In many cases data preparation can represent 60%-80% of the data mining project length. With Digital Archaeology's Digital Excavator, data preparation tasks are streamlined, results are more accurate, and the modeler has more time to focus on finding the appropriate mathematical solution--rather than wasting time with painful data issues. Digital Archaeology's software is intuitive, visual, self-documenting, and deploys what a number of analysts and customers have termed the "most elegant" user interface for data analysis and exploration ever conceived. It's the only tool specifically designed for the data prep tasks of data modeling.

**Visit our website and see for yourself! >>>> [www.digarch.com](http://www.digarch.com)**

Functions have been created which perform the following:

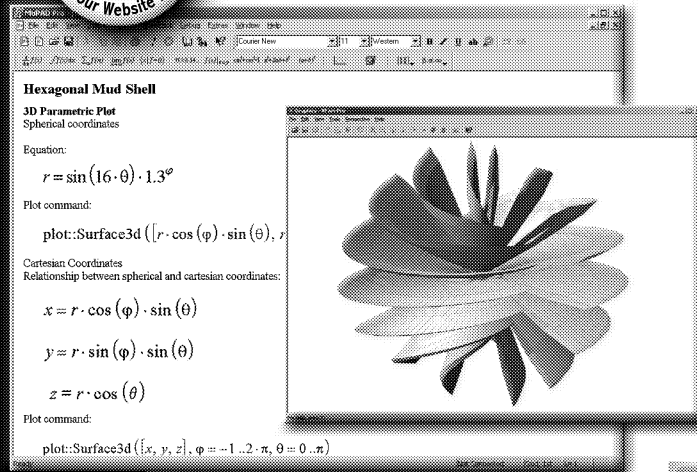
- Frequency Distributions
- Categorical Variable Profile
- Continuous Variable Profile
- Histograms
- De-duping
- Find and Replace Missing Values
- Find and Split Out Outliers
- Binning
- Correlation Matrix
- Cross-Tabs
- Panel Variables (Occupancy Map)
- Lag functions
- Decimal Scaling
- Rank and Sample Variables
- Recency, Frequency, Monetary Analysis
- N-Tile Distributions
- Gains Charts
- Many others



15721 COLLEGE BOULEVARD  
LENEXA, KS 66219  
1-877-DIGARCH (344-2724)  
[WWW.DIGARCH.COM](http://WWW.DIGARCH.COM)

# MuPAD<sup>®</sup> Pro

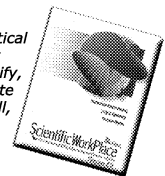
Version  
**2.0**  
See our Website for details



## The Open Computer Algebra System

MacKichan Software is proud to bring you MuPAD Pro, a full-featured computer algebra system in an integrated and open environment for symbolic and numeric computing. The MuPAD language has a Pascal-like syntax and allows imperative, functional, and object-oriented programming. Its domains and categories are like object-oriented classes that allow over-riding and overloading methods and operators, inheritance, and generic algorithms. A comfortable notebook interface includes a graphics tool for visualization, an integrated source-level debugger, a profiler, and hypertext help.

*Scientific WorkPlace, the proven solution for mathematical publishing, is an excellent companion to MuPAD Pro. It integrates with MuPAD so that you can evaluate, simplify, solve, and plot from inside your document, and evaluate functions that you have defined with MuPAD. Best of all, you typeset in LaTeX with just the click of a button.*



**MacKichan**  
SOFTWARE, INC.

Tools for Scientific Creativity Since 1981

Toll Free: 877-724-9673 • Email: [info@mackichan.com](mailto:info@mackichan.com)

Go to our homepage for free trial versions of all our products.

[www.mackichan.com/jmsm](http://www.mackichan.com/jmsm)

## Announcing the highly-anticipated new Numerical Recipes products

### Numerical Recipes in C++

The Art of Scientific Computing  
Second Edition

William H. Press, Saul A. Teukolsky,  
William T. Vetterling, and  
Brian P. Flannery

"This monumental and classic work is beautifully produced and of literary as well as mathematical quality. It is an essential component of any serious scientific or engineering library."

—*Computing Reviews*

This new version incorporates completely new C++ versions of the more than 300 *Numerical Recipes Second Edition* routines widely recognized as the most accessible and practical basis for scientific computing, in addition to including the full mathematical and explanatory contents of *Numerical Recipes in C*.

### Key Features:

- Includes linear algebra, interpolation, special functions, random numbers, nonlinear sets of equations, optimization, eigensystems, Fourier methods and wavelets, statistical tests, ODEs and PDEs, integral equations, and inverse theory.
- The routines, in ANSI/ISO C++ source code, can be used with almost any existing C++ vector/matrix class library, according to user preference

0-521-75033-4, Hardback, \$70.00

Visit [us.cambridge.org/numericalrecipes](http://us.cambridge.org/numericalrecipes) for more information on the complete line of Numerical Recipes products.

Available in bookstores or from



**CAMBRIDGE**  
UNIVERSITY PRESS

800-872-7423

[us.cambridge.org/mathematics](http://us.cambridge.org/mathematics)

### Other new Numerical Recipes products for your library...

#### Numerical Recipes Example Book [C++]

0-521-75034-2, Paperback, \$35.00

#### Numerical Recipes in C and C++ Source Code CDROM with Windows, DOS, or Macintosh Single Screen License

0-521-75037-7, CD-ROM, \$50.00

#### Numerical Recipes Multi-Language Code CDROM with LINUX or UNIX Single Screen License

Source Code for Numerical Recipes in C, C++, Fortran 77, Fortran 90, Pascal, BASIC, Lisp and Modula 2 plus many extras  
0-521-75036-9, CD-ROM, \$150.00

#### Numerical Recipes Multi-Language Code CDROM with Windows, DOS, or Macintosh Single Screen License

Source Code for Numerical Recipes in C, C++, Fortran 77, Fortran 90, Pascal, BASIC, Lisp and Modula 2 plus many extras  
0-521-75035-0, CD-ROM, \$90.00



# Numerical Recipes in Fortran from Cambridge University Press

## Numerical Recipes in Fortran 77

Volume 1 of Fortran Numerical Recipes  
Second Edition

*William H. Press, Saul A. Teukolsky,  
William T. Vetterling, and Brian P. Flannery*

"This reviewer knows of no other single source of  
so much material of this nature. Highly recommended."

—*Choice*

"...a valuable resource for those with a specific need for  
numerical software. The routines are prefaced with lucid, self-  
contained explanations...highly recommended for those who  
require the use and understanding of numerical software."

—*SIAM Review*

1992 992 pp. 0-521-43064-X Hardback \$70.00

### *Highlights include:*

- A chapter on integral equations and inverse methods
- Multigrid and other methods for solving partial differential equations
- Improved random number routines
- Wavelet transforms
- The statistical bootstrap method
- A chapter on "less-numerical" algorithms including compression coding and arbitrary precision arithmetic.

## Numerical Recipes in Fortran 77 Example Book

Second Edition

*William T. Vetterling, Saul A. Teukolsky, William H. Press, and Brian P. Flannery*

1992 256 pp. 0-521-43721-0 Paperback \$35.00

## Numerical Recipes in Fortran 90

The Art of Parallel Scientific Computing  
Volume 2 of Fortran Numerical Recipes  
Second Edition

*William H. Press, Saul A. Teukolsky, William T. Vetterling, and Brian P. Flannery*

"This present volume will contribute decisively to a significant breakthrough, as it provides models not only of the numerical algorithms for which previous editions are already famed, but also of an excellent Fortran 90 style."

—*From the Foreword by Michael Metcalf, one of Fortran 90's original designers and author of FORTRAN 90 Explained*

"This book is a classic and is essential reading for anyone concerned with the future of numerical calculation. It is beautifully produced, inexpensive for its content, and a must for any serious worker or student."

—*Computing Reviews*

Contains a detailed introduction to the Fortran 90 language and to the basic concepts of parallel programming, plus source code for all routines from the second edition of Numerical Recipes.

1996 576 pp. 0-521-57439-0 Hardback \$50.00

## Numerical Recipes Multi-Language Code CDROM with LINUX or UNIX Single Screen License

Source Code for Numerical Recipes in C, C++, Fortran 77, Fortran 90, Pascal, BASIC, Lisp and Modula 2 plus many extras

2002 0-521-75036-9 CD-ROM \$150.00

## Numerical Recipes Multi-Language Code CDROM with Windows, DOS, or Macintosh Single Screen License

Source Code for Numerical Recipes in C, C++, Fortran 77, Fortran 90, Pascal, BASIC, Lisp and Modula 2 plus many extras

2002 0-521-75035-0 CD-ROM \$90.00

Visit [us.cambridge.org/numericalrecipes](http://us.cambridge.org/numericalrecipes) for more information on the complete line of *Numerical Recipes* products.

Available in bookstores or from



**CAMBRIDGE**  
UNIVERSITY PRESS

800-872-7423

[us.cambridge.org/mathematics](http://us.cambridge.org/mathematics)

# NEW! XML PLUG-IN FOR sas®

## IMPORT XML-FORMATTED DATA INTO SAS EXPORT SAS DATA AS XML-FORMATTED DATA

Now, an easy way to move CDISC and other XML-formatted data into or out of your SAS-based systems. You don't have to know perl, XSLT, Xpath, Java®, or exotic languages. The remarkable Tekoa™ XML plug-in does it all for you.

Provided free of charge to any SAS user currently wrestling with XML. Developed by Zurich Biostatistics, the pioneer in SAS/XML integration.

### FREE. EASY. AND IT WORKS.

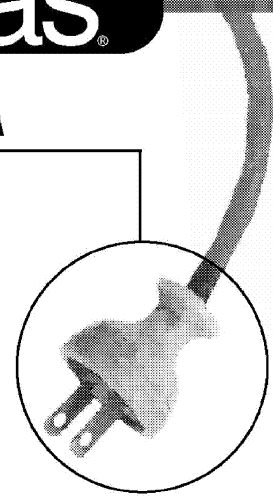
Just e-mail Michael Palmer (mcpalmer@zbi.net) and receive the fully-functional, proven Tekoa XML plug-in by e-mail.

*No charge. No obligation. No hassle. (We even support the tool. Imagine.)*

### Zurich Biostatistics, Inc.

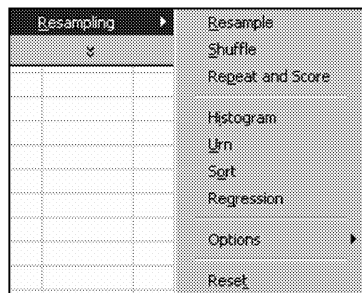
45 Park Place South, PMB 178, Morristown, NJ 07960 973 727-0025 www.zbi.net

***XML is easy if you know how. And we do.***



Tekoa XML Technology is a service mark of Zurich Biostatistics, Inc. SAS is a registered trademark of SAS Institute Inc. Java is a registered trademark of Sun Microsystems, Inc.

# Resampling Stats for Excel



Select the data you want to resample, select "resample" or "shuffle," then specify an output range for the resampled data. Calculate a statistic of interest, select "Repeat & Score," and the resampling operation will be repeated thousands (or tens of thousands) of times, and each time the value of your statistic of interest will be recorded. Does not use Excel's random number generator.

**View complete user guide and download free 30-day trial at <[www.resample.com](http://www.resample.com)>**

\$249 commercial • \$149 personal/academic • \$89 student

612 N Jackson St., Arlington, VA 22201  
Tel 703-522-2713 • Fax 703-522-5846  
[stats@resample.com](mailto:stats@resample.com)



# DataMinelt<sup>SM</sup>

announces

# Permutelt<sup>TM</sup> v2.0

## The fastest, most comprehensive and robust permutation test software on the market today.

Permutation tests increasingly are the statistical method of choice for addressing business questions and research hypotheses across a broad range of industries. Their distribution-free nature maintains test validity where many parametric tests (and even other nonparametric tests), encumbered by restrictive and often inappropriate data assumptions, fail miserably. The computational demands of permutation tests, however, have severely limited other vendors' attempts at providing useable permutation test software for anything but highly stylized situations or small datasets and few tests. Permutelt<sup>TM</sup> addresses this unmet need by utilizing a combination of algorithms to perform non-parametric permutation tests very quickly – often more than an order of magnitude faster than widely available commercial alternatives when one sample is large and many tests and/or multiple comparisons are being performed (which is when runtimes matter most). Permutelt<sup>TM</sup> can make the difference between making deadlines, or missing them, since data inputs often need to be revised, resent, or recleaned, and one hour of runtime quickly can become 10, 20, or 30 hours.

In addition to its speed even when one sample is large, some of the unique and powerful features of Permutelt<sup>TM</sup> include:

- the availability to the user of a wide range of test statistics for performing permutation tests on continuous, count, & binary data, including: pooled-variance t-test; separate-variance Behrens-Fisher t-test, scale test, and joint tests for scale and location coefficients using nonparametric combination methodology; Brownie et al. "modified" t-test; skew-adjusted "modified" t-test; Cochran-Armitage test; exact inference; Poisson normal-approximate test; Fisher's exact test; Freeman-Tukey Double Arcsine test
- extremely fast exact inference (no confidence intervals – just exact p-values) for most count data and high-frequency continuous data, often several orders of magnitude faster than the most widely available commercial alternative
- the availability to the user of a wide range of multiple testing procedures, including: Bonferroni, Sidak, Stepdown Bonferroni, Stepdown Sidak, Stepdown Bonferroni and Stepdown Sidak for discrete distributions, Hochberg Stepup, FDR, Dunnett's one-step (for MCC under ANOVA assumptions), Single-step Permutation, Stepdown Permutation, Single-step and Stepdown Permutation for discrete distributions, Permutation-style adjustment of permutation p-values
- fast, efficient, and automatic generation of all pairwise comparisons
- efficient variance-reduction under conventional Monte Carlo via self-adjusting permutation sampling when confidence intervals contain the user-specified critical value of the test
- maximum power, and the shortest confidence intervals, under conventional Monte Carlo via a new sampling optimization technique (see Opdyke, JMASM, Vol. 2, No. 1, May, 2003)
- fast permutation-style p-value adjustments for multiple comparisons (the code is designed to provide an additional speed premium for many of these resampling-based multiple testing procedures)
- simultaneous permutation testing and permutation-style p-value adjustment, although for relatively few tests at a time (this capability is not even provided as a preprogrammed option with any other software currently on the market)

For Telecommunications, Pharmaceuticals, fMRI data, Financial Services, Clinical Trials, Insurance, Bioinformatics, and just about any data rich industry where large numbers of distributional null hypotheses need to be tested on samples that are not extremely small and parametric assumptions are either uncertain or inappropriate, Permutelt<sup>TM</sup> is the optimal, and only, solution.

To learn more about how Permutelt<sup>TM</sup> can be used for your enterprise, and to obtain a demo version, please contact its author, J.D. Opdyke, President, DataMinelt<sup>SM</sup>, at [JDOpdyke@DataMinelt.com](mailto:JDOpdyke@DataMinelt.com) or [www.DataMinelt.com](http://www.DataMinelt.com).

DataMinelt<sup>SM</sup> is a technical consultancy providing statistical data mining, econometric analysis, and data warehousing services and expertise to the industry, consulting, and research sectors. Permutelt<sup>TM</sup> is its flagship product. [www.manaraa.com](http://www.manaraa.com)



## JOIN DIVISION 5 OF APA!

The Division of Evaluation, Measurement, and Statistics of the American Psychological Association draws together individuals whose professional activities and/or interests include assessment, evaluation, measurement, and statistics. The disciplinary affiliation of division membership reaches well beyond psychology, includes both members and non-members of APA, and welcomes graduate students.

Benefits of membership include:

- subscription to *Psychological Methods* or *Psychological Assessment* (student members, who pay a reduced fee, do not automatically receive a journal, but may do so for an additional \$18)
- *The Score* – the division's quarterly newsletter
- Division's Listservs, which provide an opportunity for substantive discussions as well as the dissemination of important information (e.g., job openings, grant information, workshops)

Cost of membership: \$38 (**APA membership not required**); student membership is only \$8

For further information, please contact the Division's Membership Chair, Yossef Ben-Porath ([ybenpora@kent.edu](mailto:ybenpora@kent.edu)) or check out the Division's website:

<http://www.apa.org/divisions/div5/>

---

## ARE YOU INTERESTED IN AN ORGANIZATION DEVOTED TO EDUCATIONAL AND BEHAVIORAL STATISTICS?

Become a member of the **Special Interest Group - Educational Statisticians** of the American Educational Research Association (SIG-ES of AERA)!

The mission of SIG-ES is to increase the interaction among educational researchers interested in the theory, applications, and teaching of statistics in the social sciences.

Each Spring, as part of the overall AERA annual meeting, there are seven sessions sponsored by SIG-ES devoted to educational statistics and statistics education.  
We also publish a twice-yearly electronic newsletter.

Past issues of the SIG-ES newsletter and other information regarding SIG-ES can be found at <http://orme.uark.edu/edstatsig.htm>

To join SIG-ES you must be a member of AERA. Dues are \$5.00 per year.

For more information, contact Joan Garfield, President of the SIG-ES, at [jbg@umn.edu](mailto:jbg@umn.edu).



**DEPARTMENT CHAIR  
DEPARTMENT OF  
MEASUREMENT, STATISTICS & EVALUATION  
University of Maryland  
College Park, Maryland**

The University of Maryland invites nominations and applications for the position of Chair. We seek a Chair who would understand the research mission and accomplishments of the department, as well as its teaching and service missions in the College of Education and the University. Responsibilities include:

- Facilitating and enhancing the premier graduate education experience offered by EDMS as well as leading in the development of new programs
- Continuing the Department's tradition of national and international prominence within the professional community
- Fostering the research productivity of faculty
- Serving as a strong advocate for the Department's mission in the College and the University
- Coordinating the Department's research centers and managing fiscal planning

The Department has existed within the College for more than 30 years and comprises seven tenure-track faculty members with expertise in educational statistics, applied measurement, psychometrics, evaluation, and assessment. The Department operates three research centers (CSAVE, MARCES and PADI) with which faculty members are associated, and one faculty member currently has a Career Grant from NSF. Several students have held prestigious fellowships including ETS and Fulbright Fellowships.

The Department offers Masters and Doctoral degrees in the general areas of measurement, statistics and evaluation. In addition, a Fifth Year Masters/Bachelors program is available for selected undergraduates. Jointly with the National Center for Education Statistics, we offer a Certificate Program in Large Scale Education Assessment and recently have had a certificate program approved in Measurement, Statistics and Evaluation for non-major graduate students. The proximity to Washington DC and the many agencies there make our location very desirable. More information about the Department can be found at [www.education.umd.edu/EDMS](http://www.education.umd.edu/EDMS).

**Qualifications for the position include:**

- Earned doctorate in educational statistics, educational measurement, psychometrics or related field
- Record of publications and external funding commensurate with appointment at rank of Professor
- Strong communication and leadership skills
- Experience mentoring faculty at all levels
- Administrative experience at some level is desirable but not mandatory
- Managing fiscal planning

We encourage applications from minority candidates, women and persons with disabilities. The University of Maryland is an equal opportunity, affirmative action employer, and is dedicated to increasing diversity of its faculty through hiring and retention of minorities, women, and persons with disabilities.

Candidates should submit a letter of application addressing the qualifications and expectations noted above, a current curriculum vitae, and names and addresses of three persons from whom letters of reference may be requested. Requests for confidentiality until the final phase of the search will be honored.

**All nominations and applications should be forwarded to: Philip J. Burke Ph.D., Department of Special Education, Room 1308 Benjamin Building, College of Education, University of Maryland, College Park, Maryland 20742. Voice: 301-405-6515, Email: [pjburke@umd.edu](mailto:pjburke@umd.edu)**

Review of applications will begin immediately and continue until the position is filled. For fullest consideration, please submit by October 1, 2004. Appointment will be effective July 1, 2005.

**Position Available:** Top bio-tech company seeks a seasoned statistical manager to hire, develop and lead a team of applied statisticians. Primary role is to integrate statistical methodology and practice into product/process development, manufacturing operations and quality. This key leader will provide linkage between manufacturing, engineering, development and biostatistics. MS in statistics or related field.

**Research Statistician:** Established clinical group adding staff to provide dedicated preclinical support to a development center. Interact and support scientists with formulation, stability testing, bioanalytics and bio assays. PhD w/3 yrs or MS w/ 6 years industry experience required along with expertise in complicated design methods. Northeast location.

**Contact Information:** Eve Kriz, Smith Hanley Associates, 99 Park Avenue, New York, NY 10016, 212-687-9696 ext. 228, ekriz@smithhanley.com.



## Statistics Through Monte Carlo Simulation With Fortran

Shlomo S. Sawilowsky and Gail F. Fahoome  
Copyright © 2003 ISBN: 0-9740236-0-4

Purchase Email, CD, & Softcover Versions Online Via Secure Paypal At

<http://tbf.coe.wayne.edu/jmasm>

## Instructions For Authors

Follow these guidelines when submitting a manuscript:

1. *JMASM* uses a modified American Psychological Association style guideline.
2. Submissions are accepted via e-mail only. Send them to the Editorial Assistant at ea@edstat.coe.wayne.edu. Provide name, affiliation, address, e-mail address, and 30 word biographical statements for all authors in the body of the email message.
3. There should be no material identifying authorship except on the title page. A statement should be included in the body of the e-mail that, where applicable, indicating proper human subjects protocols were followed, including informed consent. A statement should be included in the body of the e-mail indicating the manuscript is not under consideration at another journal.
4. Provide the manuscript as an external e-mail attachment in MS Word for the PC format only. (Wordperfect and .rtf formats may be acceptable - please inquire.) Please note that Tex (in its various versions), Exp, and Adobe .pdf formats are designed to produce the final presentation of text. They are not amenable to the editing process, and are not acceptable for manuscript submission.
5. The text maximum is 20 pages double spaced, not including tables, figures, graphs, and references. Use 11 point Times Roman font. If the technical expertise is available, submit the manuscript in two column format.
6. Create tables without boxes or vertical lines. Place tables, figures, and graphs “in-line”, not at the end of the manuscript. Figures may be in .jpg, .tif, .png, and other formats readable by Adobe Illustrator or Photoshop.
7. The manuscript should contain an Abstract with a 50 word maximum, following by a list of key words or phrases. Major headings are Introduction, Methodology, Results, Conclusion, and References. Center headings. Subheadings are left justified; capitalize only the first letter of each word. Sub-subheadings are left-justified, indent optional.
8. Do not use underlining in the manuscript. Do not use bold, except for (a) matrices, or (b) emphasis within a table, figure, or graph. Do not number sections. Number all formulas, tables, figures, and graphs, but do not use italics, bold, or underline. Do not number references. Do not use footnotes or endnotes.
9. In the References section, do not put quotation marks around titles of articles or books. Capitalize only the first letter of books. Italicize journal or book titles, and volume numbers. Use “&” instead of “and” in multiple author listings.
10. *Suggestions for style*: Instead of “I drew a sample of 40” write “A sample of 40 was selected”. Use “although” instead of “while”, unless the meaning is “at the same time”. Use “because” instead of “since”, unless the meaning is “after”. Instead of “Smith (1990) notes” write “Smith (1990) noted”. Do not strike spacebar twice after a period.

## Print Subscriptions

Print subscriptions including postage for professions is US \$60 per year; graduate students is US \$30 per year; and libraries, universities, and corporations is US \$195 per year. Subscribers outside of the US and Canada pay a US \$10 surcharge for additional postage. Online access is currently free at <http://tbf.coe.wayne.edu/jmasm>. Mail subscription requests with remittances to JMASM, P. O. Box 48023, Oak Park, MI, 48237. Email journal correspondence, other than manuscript submissions, to [jmasm@edstat.coe.wayne.edu](mailto:jmasm@edstat.coe.wayne.edu).

## Notice To Advertisers

Send requests for advertising information to [jmasm@edstat.coe.wayne.edu](mailto:jmasm@edstat.coe.wayne.edu).



**SOFTWARE SOLUTIONS**  
for Science & Engineering

# Lahey/Fujitsu Fortran

The standard for Fortran programming  
from the leader in Fortran language systems

## LF95 Fortran for Linux and Windows

Full Fortran 95/90/77 support  
Unsurpassed diagnostics  
Intel and AMD optimizations

IMSL compatible  
Fujitsu SSL2 math library  
Wisk graphics package

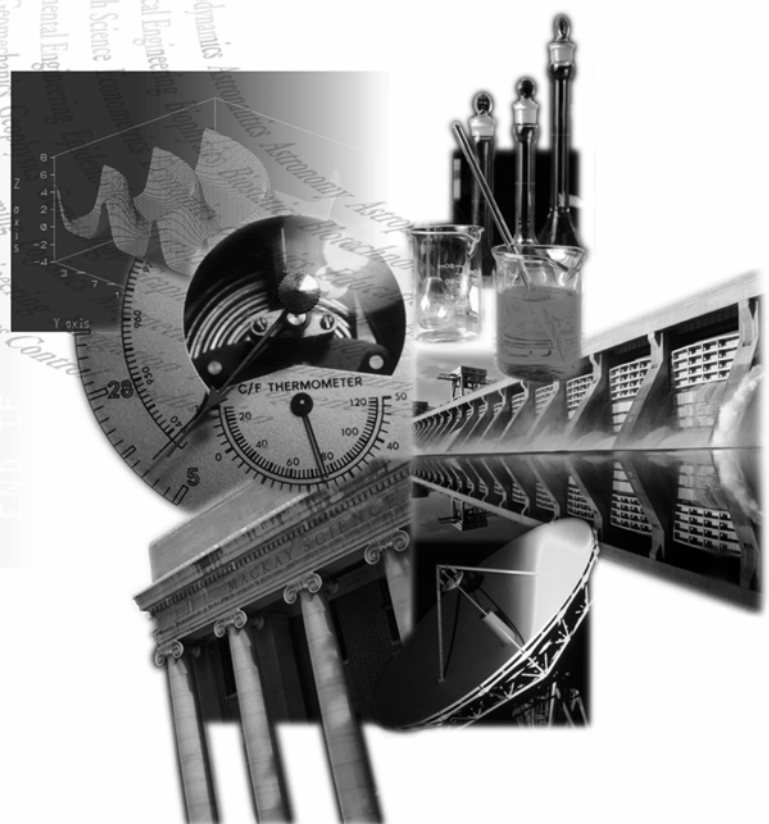
## LF Fortran for the Microsoft® .NET Framework - Coming Soon !

Visual Studio integration  
Windows / Web Forms designer  
Project and code templates

On-line integrated help  
XML Web services  
ADO.NET support

Visit [www.lahey.com](http://www.lahey.com) for more information

```
ELSE
  poly_coef
END IF
ELSE
  poly_coef
END IF
END FUNCTION poly_c
SUBROUTINE poly_ini
TYPE(poly), INTENT
REAL(fpkind), INTE
IF ( .NOT. PRESENT
  NULLIFY ( p%coef
ELSE
  m = UBOUND(v,i)
  IF ( max_degree
  ALLOCATE ( p%
  p%coefs
ELSE
  ALLOC
  p%coef
END IF
```



Lahey Computer Systems, Inc.  
865 Tahoe Blvd - P.O. Box 6091  
Incline Village, NV 89450 USA  
1-775-831-2500  
[www.lahey.com](http://www.lahey.com)

NEW IN 2004

# significance

statistics making sense

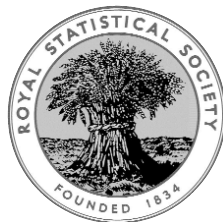
The new magazine of the  
Royal Statistical Society

Edited by Helen Joyce

**Significance** is a new quarterly magazine for anyone interested in statistics and the analysis and interpretation of data. It aims to communicate and demonstrate, in an entertaining and thought-provoking way, the practical use of statistics in all walks of life and to show how statistics benefit society.

Articles are largely non-technical and hence accessible and appealing, not only to members of the profession, but to all users of statistics.

As well as promoting the discipline and covering topics of professional relevance, **Significance** contains a mixture of statistics in the news, case-studies, reviews of existing and newly developing areas of statistics, the application of techniques in practice and problem solving, all with an international flavour.



**Special Introductory Offer:**  
25% discount on a new personal subscription  
Plus **Great Discounts for Students!**

 **Blackwell**  
Publishing

Further information including submission guidelines, subscription information and details of how to obtain a free sample copy are available at

[www.blackwellpublishing.com/SIGN](http://www.blackwellpublishing.com/SIGN)